

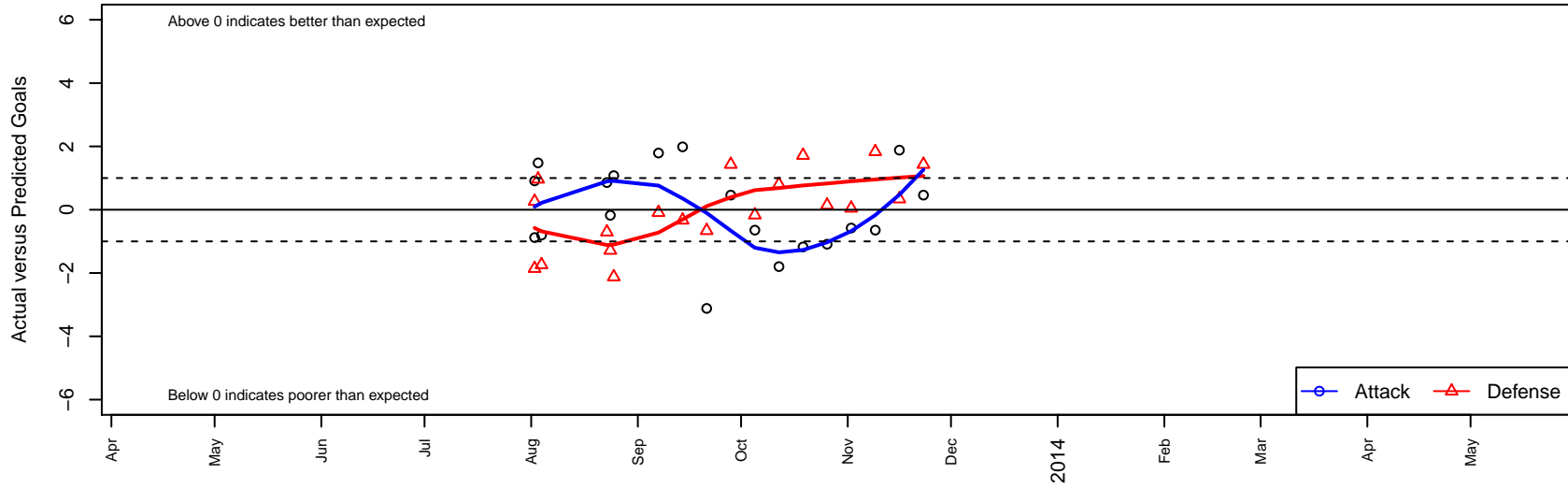
FC Everett B01

Everett, WA
 B01 total strength=473
 attack=0.38 defense=0.28
 fall league = NPSL B12D3
 alt names used:
 FC Everett

Venues played:
 Marysville Strawberry Classic BU12 Group 2
 Sky River BU12
 NPSL B12D3



FC Everett B01
 Dots are actual minus expected GF (blue circles) and GA (red triangles).
 Blue line is smoothed change in attack strength. Red is smoothed change in defense strength.



	date	home		away		venue	pred.home	pred.away
19088	2013-11-23	FC Everett B01	2	Seattle United NE White B01	0	NPSL B12D3	1.54	1.43
18422	2013-11-16	ISC Arsenal White B01	0	FC Everett B01	5	NPSL B12D3	0.34	3.12
17683	2013-11-09	Lake Hills Legends B01	0	FC Everett B01	1	NPSL B12D3	1.83	1.64
16686	2013-11-02	FC Everett B01	1	Newport FC Dragons B01	1	NPSL B12D3	1.58	1.05
15795	2013-10-26	Seattle United W White B01	2	FC Everett B01	0	NPSL B12D3	2.14	1.09
14875	2013-10-19	Crossfire Select Perry B01	0	FC Everett B01	1	NPSL B12D3	1.72	2.18
13815	2013-10-12	FC Everett B01	0	Mukilteo Strikers B01	3	NPSL B12D3	1.80	3.80
12798	2013-10-05	FC Everett B01	1	Lake Hills Legends B01	2	NPSL B12D3	1.64	1.83
11854	2013-09-28	Seattle United NE White B01	0	FC Everett B01	2	NPSL B12D3	1.43	1.54
10906	2013-09-21	FC Everett B01	0	ISC Arsenal White B01	1	NPSL B12D3	3.12	0.34
9933	2013-09-14	ISC Arsenal Red B01	1	FC Everett B01	4	NPSL B12D3	0.67	2.01
8991	2013-09-07	FC Everett B01	4	Seattle United S White B01	1	NPSL B12D3	2.21	0.91
8358	2013-08-25	Impact FC Black B01	5	FC Everett B01	2	Sky River BU12	2.88	0.92
7977	2013-08-24	FC Everett B01	2	Crossfire Select Perry B01	3	Sky River BU12	2.18	1.72
7661	2013-08-23	Gala FC B01	1	FC Everett B01	3	Sky River BU12	0.29	2.14
5679	2013-08-04	CB United Navy B01	8	FC Everett B01	0	Marysville Strawberry Classic BU12 Group 2	6.26	0.80
5399	2013-08-03	Gala FC Red B01	0	FC Everett B01	3	Marysville Strawberry Classic BU12 Group 2	0.96	1.52
5213	2013-08-02	NSC Thunder B01	3	FC Everett B01	0	Marysville Strawberry Classic BU12 Group 2	3.26	0.88
5216	2013-08-02	Seattle United W White B01	4	FC Everett B01	2	Marysville Strawberry Classic BU12 Group 2	2.14	1.09